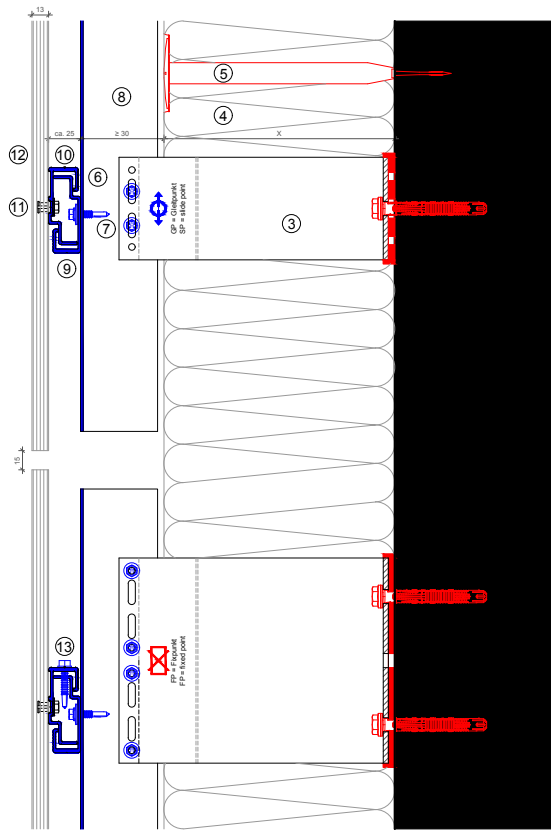
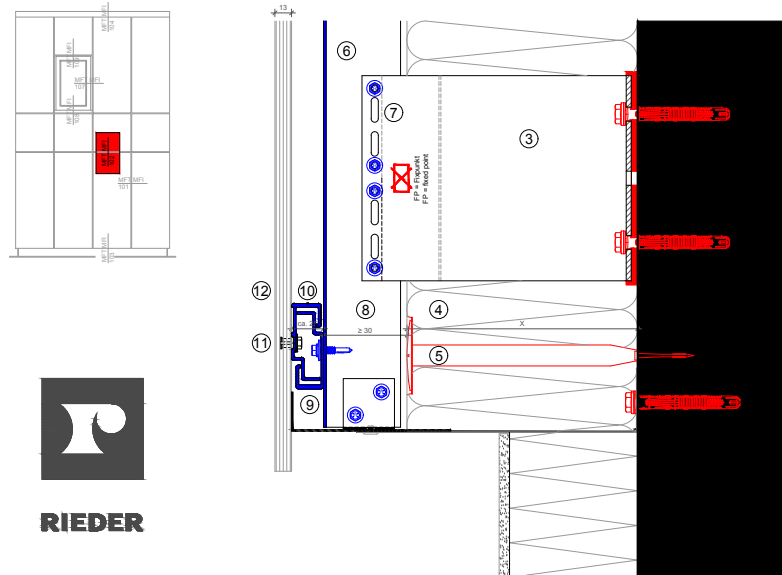


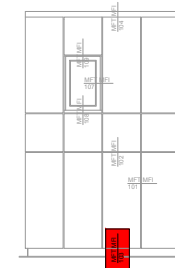
Vertikalschnitt - Plattenstoß / vertical section - panel joint



Vertikalschnitt - Sockelabschluss / vertical section - base detail



- Legende**
- 1 Untergrund/ basement
  - 2 Dübel II, Stahl/ anchor acc. to static
  - 3 Distanzhalter + Isolator/ bracket + isolator
  - 4 Wärmedämmung/ insulation
  - 5 Befestigung WD/ fixing insulation
  - 6 Tragprofil/ profile
  - 7 Bohrschrauber self drilling screw
  - 8 Hinterlüftung/ ventilation
  - 9 Agraffenträgerprofil/ load-bearing hanger profile
  - 10 Agraffe/ hanger
  - 11 Befestigung Platte/ fixing cladding
  - 12 Fassadeplatten/ cladding - Rieder
  - 13 Fixierschrauber/ fixing screw



- Legende**
- 1 Untergrund/ basement
  - 2 Dübel II, Stahl/ anchor acc. to static
  - 3 Distanzhalter + Isolator/ bracket + isolator
  - 4 Wärmedämmung/ insulation
  - 5 Befestigung WD/ fixing insulation
  - 6 Tragprofil/ profile
  - 7 Bohrschrauber self drilling screw
  - 8 Hinterlüftung/ ventilation
  - 9 Agraffenträgerprofil/ load-bearing hanger profile
  - 10 Agraffe/ hanger
  - 11 Befestigung Platte/ fixing cladding
  - 12 Fassadeplatten/ cladding - Rieder
  - 13 Fixierschrauber/ fixing screw