

OBJECT FACT

ströher
Clinker. Ceramics. Competence.

EDITION
JANUARY 2019

10

GREEN TECH BUILDING MATERIAL CLINKER BRICK SLIPS
SUSTAINABLE FACADES FOR CONTEMPORARY ARCHITECTURE.

SUPERLATIVE RUSSIAN DEVELOPMENT.
„BRICK TO CLICK“ FOR MEGA-FACADES –
VENTILATED CURTAIN WALLS WITH SUSTAINABLE STATUS.

MOSOW HEART,
MOSCOW, RUSSIA
PAGE 2



GOLDAMMERWEG,
COLOGNE, GERMANY

BACK TO THE FUTURE.
THE BAUHAUS TRADITION AND CLINKER
BRICK SLIPS MERGE TO CREATE EXCLUSIVE
SUSTAINABLE RESIDENTIAL ARCHITECTURE.

PAGE 4



TÖNGESGASSE
FRANKFURT, GERMANY

BIG ARCHITECTURAL GESTURE
FOR THE „KLEINE ZEIL“.
CLINKER BRICK SLIPS FOR URBAN
REDEVELOPMENT WITH A MODERN FACE.

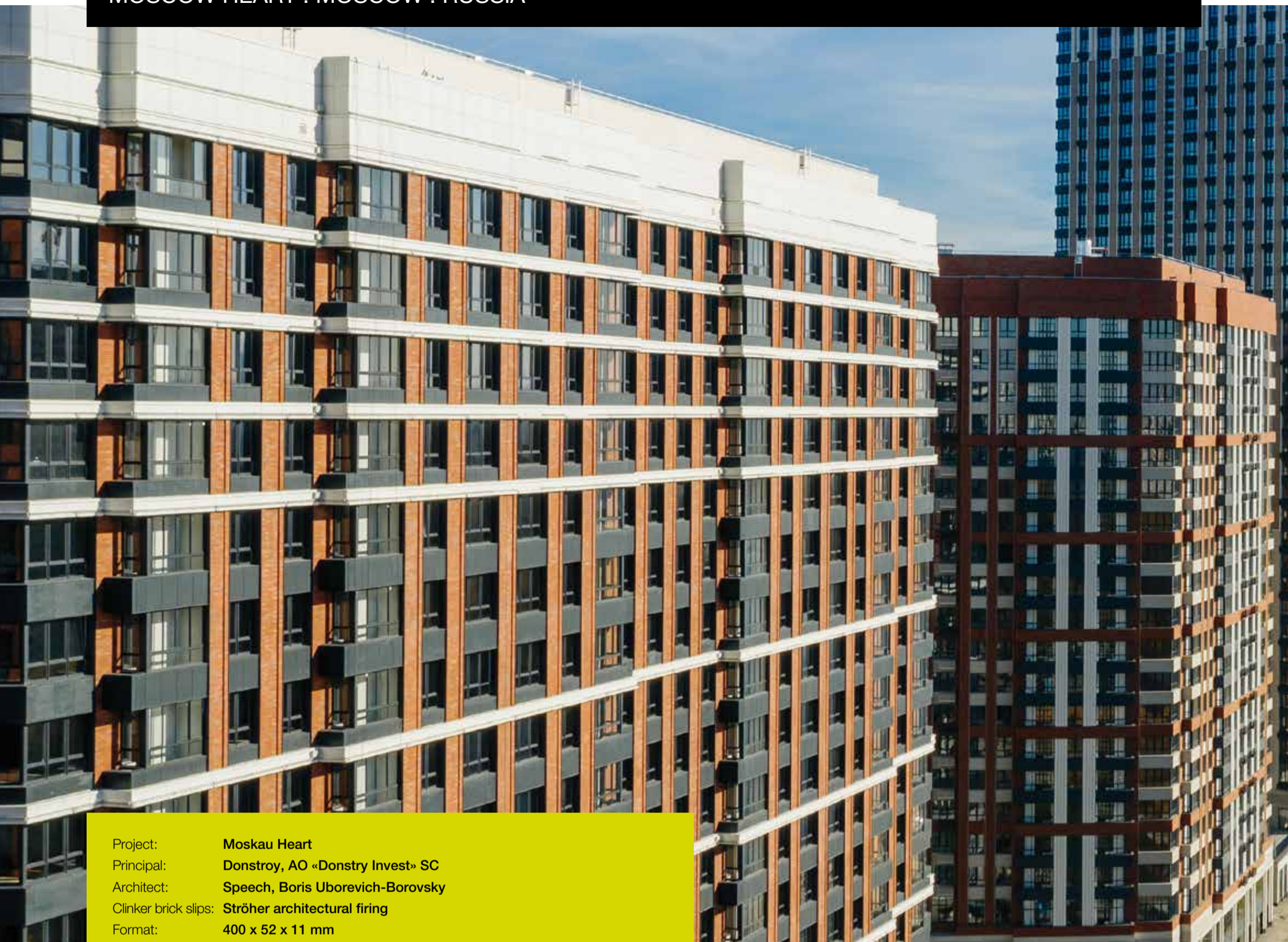
PAGE 6



HUMANA ÄLDREOMSORG,
VÄXJÖ, SWEDEN

ARCHITECTURALLY EFFECTIVE.
SOPHISTICATED FACADE DESIGN
FOR A IMPRESSIVE RESIDENTIAL
PROJECT.

PAGE 8



Project: Moskau Heart
Principal: Donstroy, AO «Donstry Invest» SC
Architect: Speech, Boris Uborevich-Borovsky
Clinker brick slips: Ströher architectural firing
Format: 400 x 52 x 11 mm
Quantity: 52.000 m² area
System: Ronson 500, Ronson 200
Photos: Donstroy, AO «Donstry Invest» SC

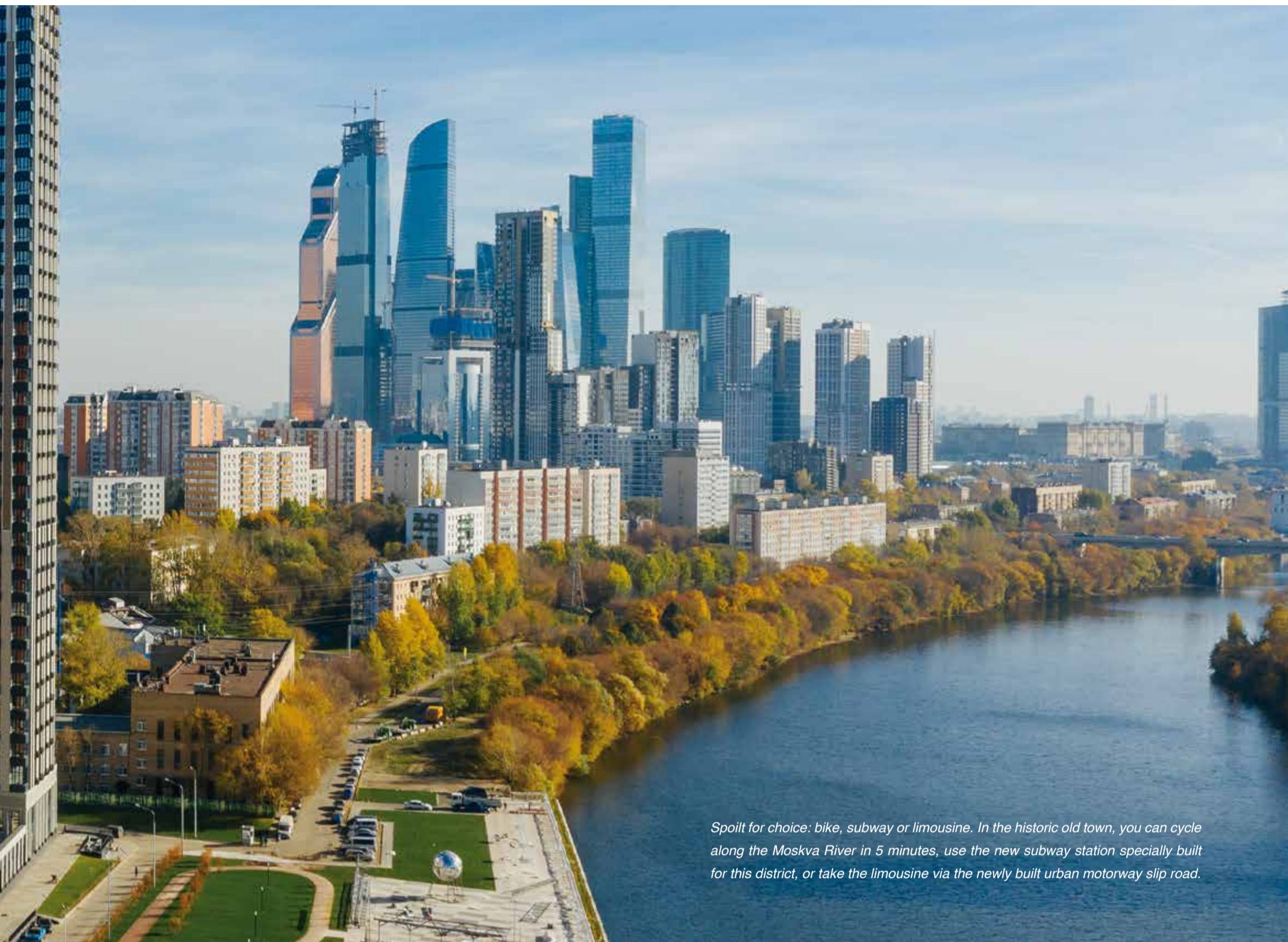
SUPERLATIVE RUSSIAN DEVELOPMENT. „BRICK TO CLICK“ FOR MEGA-FACADES – VENTILATED CURTAIN WALLS WITH SUSTAINABLE STATUS.

The mantra of every profitable real estate project is „location, location, location“. Here, a distinction is made between the macro- and micro-location and there is a differentiation according to hard and soft factors. „Heart of Moscow“ is a superlative development in respect of all these aspects that also takes your breath away with surprisingly emotional value factors. As well as being even more luxurious, even more technological and even more service-oriented, to say nothing of – or maybe precisely because of – the location right in the middle of the megacity of Moscow, a milestone is reached with the new lifestyle factors such as the human element, sustainability and closeness to nature. Thus, despite being a high-status high-security gated community with its own beach, park and amphitheat-

re, it feels like a restful clinker-brick idyll with the ability to move about the 9.8 hectares and talk to people in an extremely carefree way.

The installation and maintenance of the mega-facades should also be carefree. This is a particularly important prerequisite for a city like Moscow due to its extreme environmental and weather conditions. For facades of this size, there is a sustainable solution with a high status look: back-ventilated brick slip facades with a „Brick to Click“ curtain wall. In this case, the decision was made to use a combination of the Ronson system for curtain wall facades and Ströher sintered clinker brick slips. For many years, lightweight „exposed clinker brick slip“ facades have increasingly replaced the heavy exposed brickwork facades

made from clinker bricks. The reasons for this are both ecological and economic as there is no more sustainable and easy way of creating clinker facades of this size than with „Brick to Click“ clinker brick slips in ventilated curtain facade systems. And if you look back at the „Heart of Moscow“ from its private pier on the Moskva, where 1100 newly planted large trees and the many open spaces nestled among the 3,500 m² of ornamental shrubs invite you to play, do sports and relax, a very lasting impression of a clinker idyll is created.

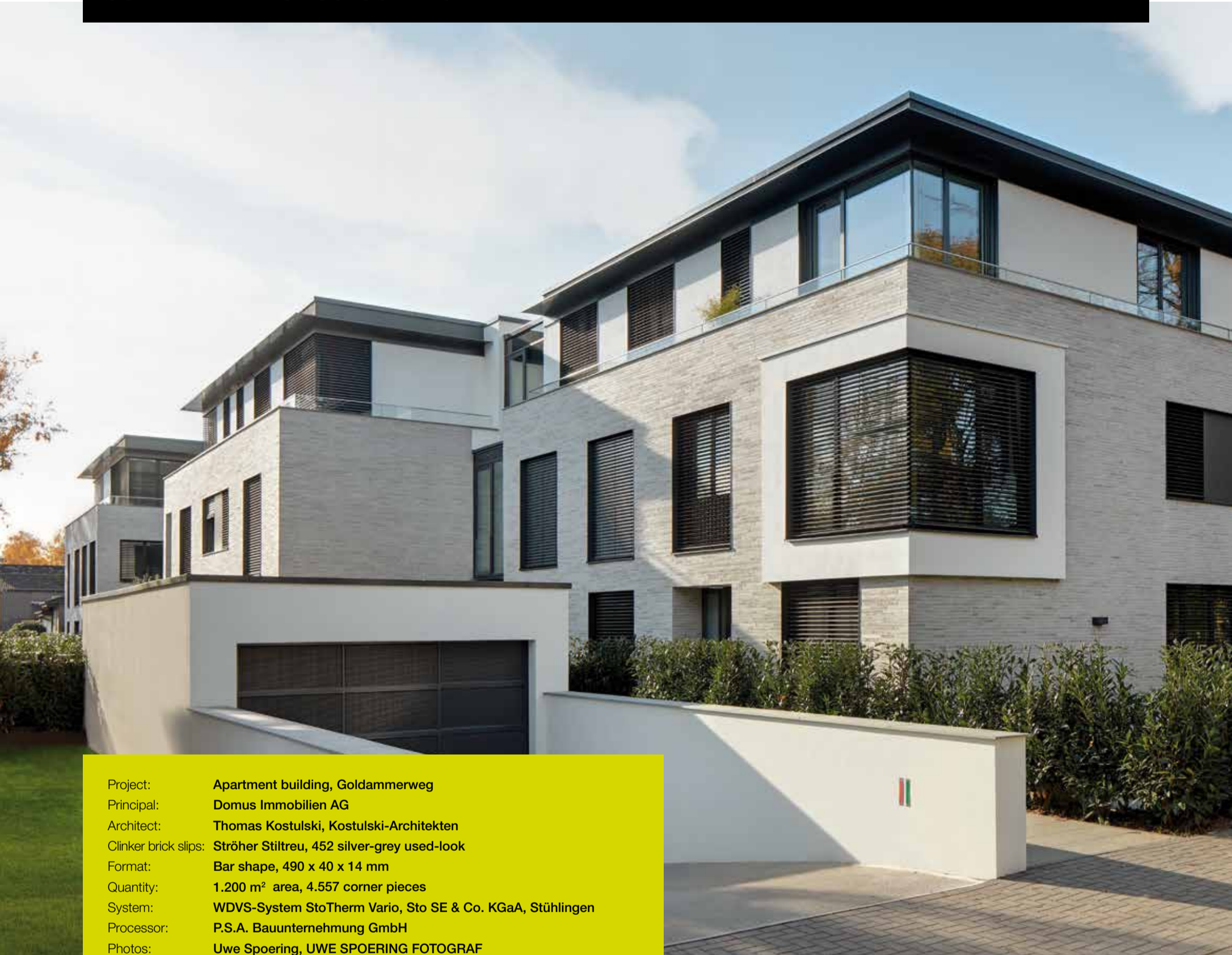


Spoilt for choice: bike, subway or limousine. In the historic old town, you can cycle along the Moskva River in 5 minutes, use the new subway station specially built for this district, or take the limousine via the newly built urban motorway slip road.



Culture pavilion and sports arena – there is room here for intellectual, cultural and creative offerings and for all kinds of sporting activities.





Project: Apartment building, Goldammerweg
 Principal: Domus Immobilien AG
 Architect: Thomas Kostulski, Kostulski-Architekten
 Clinker brick slips: Ströher Stiltreu, 452 silver-grey used-look
 Format: Bar shape, 490 x 40 x 14 mm
 Quantity: 1.200 m² area, 4.557 corner pieces
 System: WDVS-System StoTherm Vario, Sto SE & Co. KGaA, Stühlingen
 Processor: P.S.A. Bauunternehmung GmbH
 Photos: Uwe Spoering, UWE SPOERING FOTOGRAF

BACK TO THE FUTURE. THE BAUHAUS TRADITION AND CLINKER BRICK SLIPS MERGE TO CREATE EXCLUSIVE SUSTAINABLE RESIDENTIAL ARCHITECTURE.

The Cologne district of Junkersdorf is synonymous with elegant single-family homes built in the Bauhaus style in the 1920s. Since that time, the district has attracted people due to its exclusive feeling of living in a leafy area of the city – and now acts as a „home port“ for many celebrities from TV or elite sports. The area offers potential for new buildings due to the large plots of land. For example, two multi-family houses with 16 exclusive freehold apartments with 85 to 180 m² of living space have been built on Goldammerweg on a 3,850 m² plot of land previously occupied by a single family house. Today, two 1,000 m² buildings blend harmoniously into the surrounding single-family housing. To give the ensemble a lighter feel, the designers optically divided the individual sections of the building

by offsetting them and connecting them with glazed staircases.

With clear design language and a high-quality, timeless choice of materials, the architects drew on the district's Bauhaus tradition. For the facade, the investor wanted a high standard of thermal insulation and a permanent solution with low maintenance costs. Thus, an ETICS system with rock wool insulation and a shell made of clinker brick slips was created. The facade of the building complex needed to have a high-quality, exclusive appearance, so the designers deliberately chose a brick slip with a slim, long format and unconventional colouring. „The product, „Stiltreu“ from Ströher in a silver-grey used look, with its long, thin bar format of 490 x 40 mm and its slightly nuanced,

rough surface, perfectly matched our ideas about brick format and brick surface“, explains Thomas Kostulski of Kostulski Architekten, about the choice of material.

The silver-grey clinker brickwork gives the building complex a strikingly modern, yet timelessly elegant appearance over the whole facade area of 1,200 m². The monolithic effect of the building is a result of its design and installation finesse. Despite a joint ratio of approx. 30% and installation of the brick slips in a random offset pattern, a uniform surface effect was achieved by using a colour-coordinated, specially mixed grout. The facade design with „Stiltreu“ brick slips from Ströher is an exemplary showcase – because it is timelessly beautiful, energy-efficient, permanently weather-resistant and maintenance-free.



The facade design with Ströher's Stiltreu is exemplary - because it is timelessly beautiful, energy-efficient, permanently weather-resistant and maintenance-free.

Project:	Töngesgasse, Frankfurt
Architect:	KleinundArchitekten GmbH
Clinker brick slips:	Ströher Riegel 50, 455 brown-blue
Format:	Riegel, 490 x 40 x 14 mm
Quantity:	310 m² aera, 6.300 corner pieces
System:	WDVS-System StoTherm Vario, Sto SE & Co. KGaA, Stühlingen
Processor:	RETON GmbH Betonsanierung, Bautenschutz
Photos:	Norman Radon, RADON photography

BIG ARCHITECTURAL GESTURE FOR THE „KLEINE ZEIL“. CLINKER BRICK SLIPS FOR URBAN REDEVELOPMENT WITH A MODERN FACE.

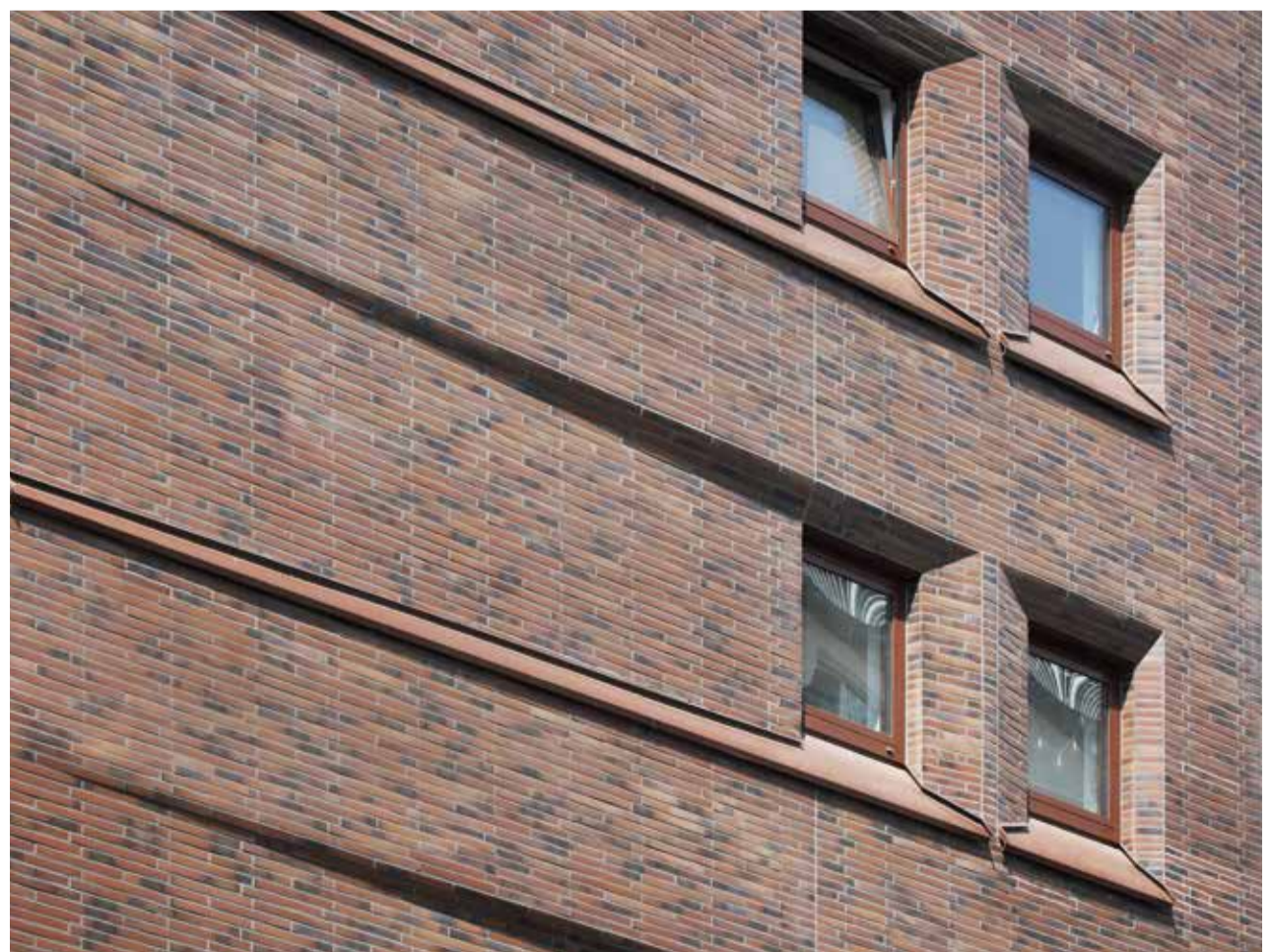
If the buildings on the Frankfurt street of Töngesgasse could talk, they would probably have a lot to report: the imposing building at number 32 would perhaps proudly chat about the glory days when the street affectionately known as „Kleine Zeil“ was still the richest and most sought-after commercial street in Frankfurt. And of course, the rectilinear corner building would also point to its celebrity factor: in 1814, Heinrich Nestle (later Henri Nestlé) came into the world within its four walls. In the here and now, the recently renovated building is proudly displaying an impressive new facade which, with its red-brown-blue, long-format clinker brick slips from Ströher covering an area of around 310 m², guarantees plenty of admiration from the neighbouring buildings.

It owes this to the Frankfurt-based architects KleinundArchitekten, who have already demonstrated their urban sensitivity with the neighbouring Töngeshof development. With this renovation, they have evidently succeeded in reinterpreting the city's history in this exposed inner city location between Dom/Römer and Zeil: resolutely modern, in the style of great master builders such as Frankfurt citizen Christoph Mäckler, Töngesgasse 32 is reminiscent of the Brick Expressionism of the 1920s.

The building now has a commanding presence in a new guise: well-proportioned, from the continuous base of the window of the traditional wool shop on the ground floor, over the other four storeys up to the diagonally protruding roof extension. The clinker-brick cornices blend into the

building as though they were one-piece. In harmony with the wide window sills, they create an additional depth in the facade, which is clad with Ströher clinker brick slips.

Töngesgasse has changed its appearance many times in its history. Buildings cannot speak, but their architecture tells a story. According to the designers at KleinundArchitekten, Ströher's clinker brick slips played a major role in the renovation project at number 32 where, „The expressive clinker bricks complement the vertical segmentation of the facade. This could also be found historically and was previously adopted in our development of the neighbouring Töngeshof,“ explains architect Markus Reuss.



Long and expressive: the bar shape format supported the vertical structure of the facade architecture and formed its sophisticated character.



ARCHITECTURALLY EFFECTIVE. SOPHISTICATED FACADE DESIGN FOR A IMPRESSIVE RESIDENTIAL PROJECT.

There are around 850 kilometres between the urban architecture firm Kjellander & Sjöberg in Stockholm and the Setesdal Valley in Norway, a popular holiday destination and also the birthplace of the legendary Norwegian sweater in the 19th century. That is quite a long way, but sometimes such a distance becomes a mere stone's throw: this could have been the case when the aforementioned architects designed a retirement home in Vaxjö, Sweden. Its impressively clinkered facade is certainly reminiscent of the traditional pattern of the popular knitted sweater – and clinker brick slips from Ströher played a key role in its creation: The lively shell of the L-shaped building was cleverly designed using four different clinker patterns, and the textile design was achieved using prefabricated facade elements set in wide gaps.

This sophisticated look recalls Alvar Aalto's experimental house in Muuratsalo in Finland, where the Danish architect established the essence of his unparalleled residential architec-

ture. Nature was always the model for his designs, and human well-being was the aim of his architecture. This is also the case for the designers at Kjellander & Sjöberg: the design of the retirement home is their statement on intelligent architecture, which thinks sustainably about its influence on people and their environment. The building's surroundings were a big factor in its design, as it is located in the heart of Astrid Lindgren's beautiful Småland region.

As the „greenest city in Europe“, environmental sustainability is very important in Vaxjö. Accordingly, the new retirement home, with 72 residential units, is LEED Platinum-certified as an „extremely high-performance environmentally-friendly building“. In addition, a further award beckons: the eye-catching project has been nominated for the „European Union Prize for Contemporary Architecture/Mies van der Rohe Award“, the most prestigious European architecture prize worth 60,000 euros. And clinker brick slips from Ströher play a part in this contemporary architectural discourse.



Project:	Humana Äldreomsorg Vaxjö
Principal:	Skanska Sweden AB
Architect:	Kjellander & Sjöberg
Clinker brick slips:	Ströher Keravette, 238 aluminium matt, 330 graphite
Format:	240 x 71 x 11 mm
Quantity:	2.290 m ²
System:	Precast concrete components
Processor:	Strängbetong
Photos:	Max Plunger, Max Plunger photography

OBJECTFACT # 10

A publication of Ströher GmbH
Ströherstraße 2-10 · D-35683 Dillenburg
T +49 (0) 2771 391-0 · F +49 (0) 2771 391-340
info@stroehrer.de · www.stroehrer.com

ströher
Clinker. Ceramics. Competence.

